

WILL YOU PLEASE LEAD ME

Music:
Leon van Veen

Lyrics & Translation:
Erwin de Vos

Duration: 5'25

ECC17.1319.01H



P.O. Box 9185
NL 3301 AD Dordrecht
The Netherlands

phone: +31 (0)78 622 75 47
email: info@europeanchoralclub.com
internet: www.europeanchoralclub.com

P.O. Box 9185
NL 3301 AD Dordrecht
The Netherlands
phone: +31 (0)78 622 75 47
email: info@europeanchoralclub.com
internet: www.europeanchoralclub.com



WILL YOU PLEASE LEAD ME

Lyrics: Erwin de Vos
Original Title: Neem Ons Bij De Hand
Translation: Erwin de Vos

Music: Leon van Veen



Narrator:

Israel, the promised land, here live the descendants of King David. The land is controlled by the Romans. They are forcing their way of life upon the people, tax them and require a cruel way. The people eagerly await salvation and freedom. Among them is Joseph, a carpenter from Nazareth, and his future wife Mary. They too hope for better times to come. They are clinging to what is written in the holy script.

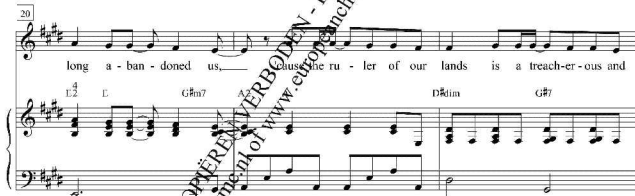
With expectation $\text{♩} = 78$



© 2012 Small Stone Media BV, Dordrecht, Holland

Reproduction of this publication without permission of the publisher is a criminal offense subject to prosecution

Duration: 5'25
ECC17.1319.01H



ECC17.1319.01H



4

ECC17.1319.01H

35

prom - is - es are i - ron - clad. Till You will show sig - nal

C# B/C# C#m# F#

38

in the sky, that will tell all the world our God's a - live... But we

C#E# A#m C#G# G#

41

still to what is writ - ten, Lord. You will free your peo - ple from their

E E/G# B/A A A/B E

ECC17.1319.01H

53

live in my own heart... E - ven though our lives are tough in the so - sen land, I'll

E# E G#m7 A2 A Amaj7/G# D#dim

56

do my part... still hold on to what is

A2 A G#sus C# C#E#

59

writ - ten that your prom - is - es are i - ron - clad. Till

F#G# C# B/C# C#E#

7

ECC17.1319.01H

44

chains. You'll show the world You are their Con - quer - or, and we know

D/E E/G# A E/G#

47

that will nev - er chang

F#m F#m/B E B

50

unis. fort.
I'll re - sist... and mind my - self, keep your prom - is - es a -

C#m/B A2 A C#m B/D#

6

ECC17.1319.01H

62

You will show a sig - nal in the sky, that will tell all the world our

F# C#E# A#m B

65

God's a - live... But we still hold on to what is writ - ten, Lord. You will

C#G# G# B/G# F#m B/A A A/B

68

free peo - ple from their chains. You'll show the world You are their

E D/E A

8

ECC17.1319.01H

71 |

Con-quer-or, and we know that will nev-er change.

L/G# C#m C#m/F# F#m/B

74 |

Lord, I beg You, will You please, lead me.

C D7/C Bm7 Am7 D

77 |

Lord, I beg You.

G G/B BmF# F# F#B Bm

80 |

will You set us free! But

G D#2 D C#F#5

83 |

still hold on to what is writ-ten, Lo that your prom-is-es are i-ron-

F# B B/C# F#

86 |

clad. Till You will show a sig-nal in the sky, that will tell

F# B F#A# D#m7

89 |

all the world: our God's a-live. But we still hold on to what is

F#2 E F#C# C# A/C# Bm A A/C#

92 |

writ-ten, Lord. You will free our peo-ple from their chains. You'll

D#2 D D/E A G/A A

95 |

show and You are their Con-quer-or, and we know that will nev-er change.

A/A# F#m Bm7 F#

98 |

You'll show the world You are their Con-quer-or, and we know

A G/A A D A/C# F#m

101 |

that will nev-er change.

Bm7 E A2

104 |

show and You are their Con-quer-or, and we know that will nev-er change.

D/A A