

CALL HIM JESUS

Music
&
Lyrics:

Ruth Elaine Schram

Duration: 2'35

ECC17.1224.01F



P.O. Box 9185
NL 3301 AD Dordrecht
The Netherlands

phone: +31 (0)78 622 75 47
email: info@europeanchoralclub.com
internet: www.europeanchoralclub.com



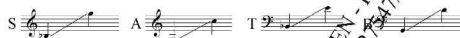
P.O. Box 9185
NL 3301 AD Dordrecht
The Netherlands
phone: +31 (0)78 622 75 47
email: info@europeanchoralclub.com
internet: www.europeanchoralclub.com



CALL HIM JESUS

Lyrics: Ruth Elaine Schram

Music: Ruth Elaine Schram



With spirit and intensity $\text{♩} = 120$

mf *TR* *travis.* or *Bassoon* only

Call Him Je - sus, call Him Won - der - ful Coun - se - lor, Je - sus, call Him

mf

Ev - er - last - ing Fa - ther, Je - sus, call Him Lord and Sav - ior, Je - sus,



© 2006 Lorenz Publishing Company, For Europe: Smallstonemediasongs.com

Reproduction of this publication without permission of the publisher is a criminal offense subject to prosecution

Duration: 2'35
ECC17.1224.01F

8

SA *mf*

Call Him Je - sus, call Him Won - der - ful Coun - se - lor, Je - sus, call Him

p

Je - sus,

A/E? *E?*

12

Ev - er - last - ing Fa - ther, Je - sus, call Him Lord and Sav - ior, Je - sus,

E? *A?* *A7/B?* *A/E?* *E?*

16

Je - sus

Je - sus, one day an an - gel came to vis - it Ma - ry, told her she was gon - na have a

E? *A?*

20

ti - ny lit - tle ba - by, that He would be... the Son... of... God, the Re - deem - er of Is - ra - el...

E? *Fm7* *Fm7/B?* *D7(b9)* *A7/B?* *E?*

24

Is - ra - el... This was the news they had all been wait - ing for; it

A/E? *E?* *E?* *E?*

27

was the hid - den of ev - ry maid - en, to be the moth - er of the bless - ed Re -

hope to be the moth - er of the bless - ed Re -

A? *E?* *Fm7* *Fm7* *Gm/F* *F?*

31 Is - ra - el. *sub. p* *cresc.*
deem - er of Is - ra - el. Is - ra - el. Call Him Je - sus, call Him Won - der - ful Son - se - lor,
deem - er of Is - ra - el.

D7maj7(9) *A7b9* *E7* *A7E+* *b7*
sub. p *cresc.*

35 Je - sus, call Him Ev - er - last - ing Fa - ther, Je - sus, call Him Lord and Sav - ior,
deem - er of Is - ra - el.

A7E+ *E7* *E7G* *A7* *A7maj7b9*

39 Je - sus, *sus.* The an - gel came to vis - it Jo - seph, told him
Je - sus. And then the an - gel came,
p *f*

A7b9 *A7b9* *E7* *F* *F/A*

43 not to be a - fraid, for he'd been cho - sen to care for Ma - ry and her Son... the Re -
Don't be a - fraid; cho - sen one, Ma - ry and her Son... the Re -

Bb7 *F/A* *Gm7* *F*

47 Is - ra - el. *cresc.*
deem - er of Is - ra - el. Is - ra - el. and call Him Je - sus, call Him
deem - er of Is - ra - el.

E7maj7(9) *Bb7C* *F* *Bb7F* *F*
sub. p

50 *cresc.*
Won - der - ful Son - se - lor, Je - sus, call Him Ev - er - last - ing Fa - ther, Je - sus, call Him
Won - der - ful Son - se - lor, Je - sus, call Him Ev - er - last - ing Fa - ther,

Bb7F *F* *F/A*
cresc.

54 Lord and Sav - ior, Je - sus, Je - sus. He is the
Je - sus. And call Him Je - sus, call Him

B7 *B7maj7C* *Bb7C* *B7F* *F* *Bb7F* *F*

58 Won - der - ful Coun - se - lor, He is the Ev - er - last - ing Fa - ther, He is the
Won - der - ful Coun - se - lor, Je - sus, call Him Ev - er - last - ing Fa - ther, Je - sus, call Him

C/G *G* *G7b9*

62 Lord and Sav - ior, Je - sus, Je - sus. He is the
Lord and Sav - ior, Je - sus, Je - sus. And call Him Je - sus, He's the

C *C/D* *C/G* *G* *C/G* *G*

66 Won - der - ful Coun - se - lor, He is the Ev - er - last - ing Fa - ther,
Won - der - ful Coun - se - lor, Je - sus, He's the Ev - er - last - ing Fa - ther,

C/G

60 He is the Lord and Sav - ior, Je - sus, Je - sus. *p cresc.* And call Him
Je - sus, He's the Lord and Sav - ior, Je - sus, Je - sus. And call Him

G *G/B* *C* *F#mD* *F#mD* *G/G* *C/G* *G*
p cresc.

73 *mp* Je - sus, Je - sus, Je - sus, Je - sus, Je - sus!
Je - sus, Je - sus, Je - sus, Je - sus, Je - sus!

N.C. *C/D* *G* *C/G* *G*
mp *f*