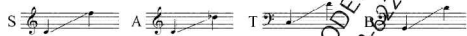


CHRIST, CRUCIFIED

Words: Anon. & Gilbert M. Martin

Music: Gilbert M. Martin



Steadily, flowingly $\text{♩} = 80$

Musical score for piano accompaniment, measures 1-12. Includes lyrics: "O Je - sus, with tears I shed, while at your cross I kneel." Chords: Cm6, Dm7(5)5/C, Cm6, G7, G7sus, G7.

Musical score for piano accompaniment, measures 13-23. Includes lyrics: "And crown thorns and from each pier - ed hand." Chords: Cm, Cm(add9), Fm7/C, E7maj7/Bb, Fm7/Ab.

© 2004 Lorenz Publishing Company.
For Europe: Small Stone Media bv, Holland

Duration: 2'51
ECC17.1038.01D

Musical score for piano accompaniment, measures 24-26. Includes lyrics: "I AM THINE (William H. Doane, 1875) Eb". Chords: Fm7/Ab, D7/A, E7(b9), E7/G, A7, E7/G, B7/F, E7, B7.

Musical score for piano accompaniment, measures 27-29. Includes lyrics: "I AM THINE (William H. Doane, 1875) Eb". Chords: E7sus/Bb, E7(b9), Am7(b5)add11, Am7(b5), Fm7/Ab, Cm, Em/G, Dm/G, F/G, Dm/G.

Broadly $\text{♩} = 72$

Musical score for piano accompaniment, measures 30-33. Includes lyrics: "O Christ of God, so precious Lamb, by love my soul is". Chords: A7/G, Gsus, G, C, Dm7/C, Dm7, Dm/G, Cm7.

Musical score for piano accompaniment, measures 34-36. Includes lyrics: "drawn; And now for - ev - er yours I am, and now my res - ur -". Chords: F/C, G7/D, B7/D#, Em, Dm7/F, D7sus/F#, C/G, Am.

Musical score for piano accompaniment, measures 37-41. Includes lyrics: "now my res - ur - rect - ed life is born!". Chords: F/C, G7/D, B7/D#, Em, Dm7/F, D7sus/F#, C/G, Am.

Musical score for vocal parts, measures 9-12. Includes lyrics: "look up - on - your wound - ed head, and all your grief and all your sor - rows".

Musical score for vocal parts, measures 13-16. Includes lyrics: "feel. It was in pain that you did die, and".

Musical score for vocal parts, measures 17-20. Includes lyrics: "I AM THINE (William H. Doane, 1875) Eb". Chords: Cm6, G7, G7sus, G7, Cm(add9), Fm7/C.

Musical score for vocal parts, measures 21-23. Includes lyrics: "I AM THINE (William H. Doane, 1875) Eb". Chords: Cm6, G7, G7sus, G7, Cm(add9), Fm7/C, E7maj7/Bb, Fm7/Ab.

Musical score for vocal parts, measures 24-26. Includes lyrics: "I AM THINE (William H. Doane, 1875) Eb". Chords: E7sus/Bb, Cm7/Bb, Fm7, A7maj7/Bb, Eb.

2
ECC17.1038.01D

Musical score for vocal parts, measures 27-29. Includes lyrics: "I AM THINE (William H. Doane, 1875) Eb". Chords: Dm7, Dm7/G, C, Cm7, Dm7/C.

Musical score for vocal parts, measures 30-33. Includes lyrics: "I AM THINE (William H. Doane, 1875) Eb". Chords: F/C, C2/D, C, A7(b9), Am, Dm7/F, F#dim, C/G.

Musical score for vocal parts, measures 34-36. Includes lyrics: "I AM THINE (William H. Doane, 1875) Eb". Chords: F/C, G7/D, B7/D#, Em, Dm7/F, D7sus/F#, C/G, Am.

Musical score for vocal parts, measures 37-41. Includes lyrics: "I AM THINE (William H. Doane, 1875) Eb". Chords: F/C, G7/D, B7/D#, Em, Dm7/F, D7sus/F#, C/G, Am.

Musical score for vocal parts, measures 42-46. Includes lyrics: "I AM THINE (William H. Doane, 1875) Eb". Chords: F/C, G7/D, B7/D#, Em, Dm7/F, D7sus/F#, C/G, Am.