

# REJOICE IN THE RISEN CHRIST

words and music

Christopher Wordsworth and Allen Pote

Duration 2'52  
ECC17.0089.01E



P.O. Box 9185 phone: +31 (0)78 622 75 47  
NL 3301 AD Dordrecht email: info@europeanchoralclub.com  
The Netherlands internet: www.europeanchoralclub.com

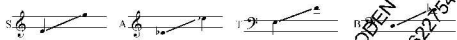
P.O. Box 9185 phone: +31 (0)78 622 75 47  
NL 3301 AD Dordrecht email: info@europeanchoralclub.com  
The Netherlands internet: www.europeanchoralclub.com



# REJOICE IN THE RISEN CHRIST

Words: Christopher Wordsworth, alt.

Music: Allen Pote



With excitement (♩ = ca. 63)

Musical score for the first system, including vocal line and piano accompaniment. The lyrics are: "Christ has died, Christ is ris-en, Christ will come a-gain. Christ has died, Christ is ris-en, Christ will come a-gain. Je - lu - ia, al - le - lu - ia, hearts to heav'n and voice - es raise."

Musical score for the second system, including vocal line and piano accompaniment. The lyrics are: "Sing to God a hymn of glad - ness, sing to God a hymn of praise."

Musical score for the third system, including vocal line and piano accompaniment. The lyrics are: "He who on the cross a vic-tim for the world's va-ri-abled, Je - sus Christ, the"

Musical score for the fourth system, including vocal line and piano accompaniment. The lyrics are: "King of heav'n, He is ris-en from the dead."

31 *mf* *ritardando* *div.*  
 Christ is ris-en, ris-en, al-le-lu-ia, ris-en, ris-en in glo-rie

C7/F B F7/Bb B D7/A E7/Bb

36 *f* *all div.*  
*grave.* Christ is ris-en, ris-en, al-le-lu-ia, ris-en to-day.

D7/A E7/Bb A7/D F7/Bb B F7/Bb (normal articulation) D7/B Bb F G7/F F

41 *mf* *ritardando*  
 wake, a-rise, lift up your voice, let Eas-ter mus-ic

Bb7/A F Bb E C7/E Fm G7 C

5

ECC17.0089.01E

45 *all div.* *no breath*  
 swell. Re-joice in Christ, a-gain re-joice, and on his prais-

Fm Bb F C7/F Fm

49  
 on his prais-es, on his prais-es

G7/B G7/D G7/C G7/Bb E7/F F E7/F F

53 *mf* *all unison*  
 Christ has died, Christ is ris-en, Christ will come a-gain.

B7/A C7/G B7/F Cm A7 F C7 F

6

ECC17.0089.01E

57  
 Christ has died, Christ is ris-en, Christ will come a-gain.

B7 B7/A C7/G B7/F Cm Cm7 B7/F

61 *f* *all div.*  
 Christ has died, Al-le-lu-ia, Al-le-lu-ia.  
 Christ has died, Christ is ris-en, a-gain.

B7/A Cm7/G B7/D Cm7 B7/D

65  
 Christ will come a-gain.

Gm Ab Eb F Cm7 E7/F

7

ECC17.0089.01E

69  
 Christ has died, Al-le-lu-ia, Al-le-lu-ia,  
 Christ has died, Christ is ris-en.

B7 B7/A C7/G B7/F Cm7 B7/D

73 *f*  
 Christ will come gain, A-men, a-men!

div. Cm Gm Cm7/B B7 G7 A7 B7 G7 A7

78 *all div.*  
 men.

G7 A7 G7 A7 G7 Fm7 Eb7 Fm7 Eb7 Eb7 C B7

8

ECC17.0089.01E